

# PLASTEEL® ELUTRON® Double-Wall INSTALLATION INSTRUCTIONS Tank

## I. GENERAL

The **PLASTEEL ELUTRON®** underground tank is a U.L. Listed Jacketed tank providing corrosion protection and 360° secondary containment per U.L. 1746 and 58.

**ELUTRON®** underground tanks must be installed according to these installation instructions, the latest issue of the Flammable and Combustible Liquids Code, N.F.P.A. 30 for underground tanks and the Authority Having Jurisdiction (AHJ).

The installer and/or owner must read and be familiar with the entire installation instructions and Appendix A prior to installing the **ELUTRON®** tank. To activate the **PLASTEEL ELUTRON®** Tank Warranty, a completed and signed Certificate of Installation for the **PLASTEEL ELUTRON®** Underground Tank must be returned to the manufacturer. For additional installation references, consult the current editions of:

- Petroleum Equipment Institute, RP-100
- American Petroleum Institute, RP-1615.

If tank will be stored above ground more than 30 days, consult the manufacturer for procedures.

Products stored in the **ELUTRON®** tank must not exceed 150° (66° C). The **ELUTRON®** tank shall be maintained per API RP 1621, Appendix D.

## II. VISUAL INSPECTION

Prior to setting tank in hole, inspect exterior for damage. If tank exterior is damaged, call factory regarding correct repair procedures. Exterior damage is indicated when the blue color of the FRP laminate has shown a white fractured pattern.

## III. HANDLING

Good construction engineering practice, common sense and safety must prevail during this phase. **ELUTRON®** tanks are not to be dropped or rolled off of the delivery vehicle onto the ground or into the hole. The lifting hook or hooks provided must be used in combination with the proper capacity unloading equipment. It is the responsibility of the owner to provide the qualified personnel and safe, proper unloading equipment, with specific consideration given to tank weight and reach distance to set tank in excavation. The preferred lifting cable included angle is 60° and must never exceed 120°. A spreader bar may be used to achieve this angle.

## IV. EXCAVATION DEPTH, BEDDING AND BACKFILL

Follow all applicable local regulations and codes. When excavating, allow a minimum clearance of 6" for backfill around the tank. For minimum burial cover, consult N.F.P.A. 30. If burial cover over top of tank exceeds five (5) feet, consult factory. Backfill materials should be clean, debris free, sand or pea gravel. Hydrocarbon exposed sand or pea gravel may be re-used if approved by the AHJ. Native sand may be used if approved by the tank manufacturer and the AHJ. Allow a minimum of 12" of backfill between traffic slab and all appurtenances that are attached to the tank. Damage to tank may occur if surface traffic loads are transmitted directly to tank.

## V. ANCHORING SYSTEMS

**CAUTION:** The decision to use an anchoring system is the responsibility of the owner. Damage to the tank may occur if the tank is subjected to movement.

Consult the factory for number, size and type of holddown assemblies required when using a concrete pad under the tank. You

may set and securely anchor the **ELUTRON®** tank on the pad with a minimum of 6" of backfill between tank bottom centerline and the pad. Upon AHJ approval, you may set and securely anchor the **ELUTRON®** tank directly on the smooth, flat pad taking care to place a 12" wide x 1" thick piece of felt between the entire tank bottom centerline and the pad to minimize damage during placement. Consult factory for other anchoring techniques.

## VI. TESTING

**PRE-INSTALLATION:** Aboveground, prior to replacement of tank in excavation, precisely follow one of the three testing options cited in Appendix A attached. Do not deviate from these procedures. If the **ELUTRON®** tank is delivered with a vacuum on the interstice, refer to Option #2 of Appendix A.

**CAUTION:** IF OPTION #3 IS USED, DO NOT APPLY ANY PRESSURE TO THE INTERSTICE BEFORE THOROUGHLY UNDERSTANDING AND FAITHFULLY FOLLOWING THE PROCEDURES CITED IN OPTION #3 OF APPENDIX A. DAMAGE TO TANK MAY OCCUR IF YOU DEVIATE FROM THE PROCEDURES AND SPECIFICATIONS.

**POST-INSTALLATION:** Complete the backfill procedures to the top of the tank. Complete all piping and connections ensuring that unused openings are secured tight with threaded steel plugs. Apply a 5 PSIG pressure test in the primary tank and check for tightness of piping connections and tank manhole covers. Gauge should be checked prior to testing for accuracy and have a maximum limit of 15 PSIG.

**CAUTION:** THE PRIMARY TANK TEST PRESSURE SHALL NOT EXCEED 5 PSIG. DAMAGE TO TANK MAY OCCUR. ISOLATE PIPING FROM TANK BEFORE TESTING THE PIPING AT HIGHER PRESSURES.

The interstice (annular space) will be tested using option #2 or #3 in Appendix A.

**OPTION:** Request Appendix B for procedures to perform the Interstitial Vacuum Test that has been third party evaluated to meet the EPA tank tightness test protocol.

## VII. VENTING

The primary tank must be vented to atmospheric pressure except for use with a vapor recovery system, provided the pressure or vacuum does not exceed 1 psi (6.9 kpa). Compliance is required for underground tank venting in N.F.P.A. 30. The interstitial space does not require venting. It is recommended that the interstice be sealed air tight.

**CAUTION:** DO NOT MANIFOLD VENT FROM PRIMARY TANK TO VENT FROM INTERSTITIAL SPACE.

## VIII. PLASTEEL® SEALING PROCEDURES

These procedures must be performed prior to completion of backfill and AFTER TESTING. To ensure complete corrosion protection, the following instructions must be followed:

### a. General instructions for working with fiberglass resin

By carefully performing the following steps, your **ELUTRON®** tank will be fully protected from corrosion. The kit includes materials

for covering and protecting the unused tank connections, tank handling hooks, and each of the pipe connections on top of the tank. **The PLASTEEL® kit contains hazardous materials. Read the enclosed material safety data sheets before proceeding to work with PLASTEEL® kit materials.** The standard kit includes the following materials and tools:

**BOX A**

4 each 1 Qt. bottles **PLASTEEL®** resin

**BOX B**

1 each 1 Qt. bottle	Resin emulsifier or Acetone
4 each 1 Oz. bottles	Catalyst
6 each	Star Mats
10 each	Mat strips
6 each	Plug mats
1 - 3 each	4" Flat pipe plugs
2 each	Paint stirring sticks
2 each	1-1/2" Paint brushes
3 each	Mixing cups
1 each Sheet	60 grit sandpaper
4 each	Hook Mats

Additional material is supplied when tank configured with containment collars, special fittings, manholes or extension spools.

**b. Preparation**

Do not mix the catalyst with the resin until all the pieces you wish to impregnate have been fitted in place and the 1" strips of matting are laid out next to their corresponding pipe connections. Once the resin and catalyst are mixed, a chemical reaction begins that cannot be reversed. Working time for a mixed batch is about 30 minutes at 70° F. Higher temperatures make it set up more quickly, shortening working time. The key things to remember are: (1) Be prepared and have all parts prefitted and in place before mixing the resin. (2) Mix only as much resin as you can use in 30 minutes and mix it thoroughly—stir for at least 1 minute. (3) Work quickly and efficiently. Lower temperatures increase resin set-up time and require additional catalyst.

**c. Mixing the catalyst**

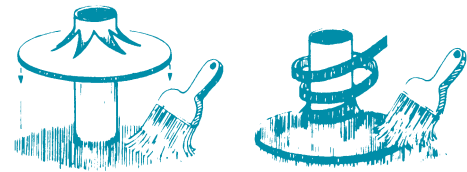
Resin and catalyst must be mixed in the proper proportions so that the resin will harden properly. Below is a list of some various size batches you could mix.

RESIN	CATALYST
1 qt. ....	.1/2 oz.
1 pint ....	.1/4 oz.
1 cup ....	.1/8 oz.

If you're not sure how fast it will set up, it is better to mix several small batches rather than one big one.

**d. Application**

Using the paint brush provided, DAB the resin mixture into the cloth rather than painting it on. You are trying to completely soak the matting with resin, not just cover it.

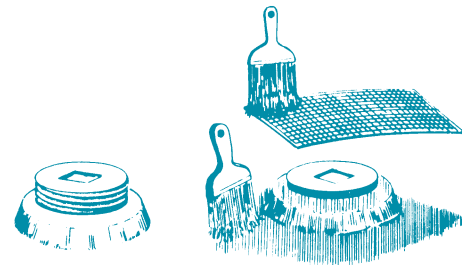


**e. Pipe and Risers**

For standard threaded fittings: Apply resin to the base of the pipe and top of tank and push down the matting circle as shown. Impregnate with resin.

Impregnate the strips of matting and wrap like tape around the joint at the base and working upward. Apply any leftover resin to the outside of the joints when done wrapping.

For special bolt-up flanges: Apply generous coating of resin to exposed metal edges of flange and wrap with resin impregnated matting strips. Apply leftover resin to nuts and bolts.



**f. Steel Plugs**

After fitting fiberglass matting, lift it up and apply mixed resin to the top of the tank surface where the matting will contact. Stick matting over plug into wet resin and totally impregnate matting with resin, dabbing in with paint brush as described above.

**g. Manhole, Extension Spool and Handling Hooks**

Apply generous coating of resin impregnated matting strips to exposed metal edges and to handling hooks (matting precut). Apply leftover resin to nuts and bolts except on access cover.

**h. Cleanup**

Hands and tools may be cleaned with resin emulsifier before the resin has hardened. No solvent will work once the resin has hardened.

**NOTE:**

The **ELUTRON®** tank installation is not complete until all exposed steel surfaces on tank are sealed with the **PLASTEEL®** fiberglass resin.

For additional assistance or information, call your **PLASTEEL ELUTRON®** tank factory below:

Your Licensed PLASTEEL ELUTRON® tank manufacturer is: